

Nordkapp

**BOAT HOUSE
BULLETIN**



A Factual Report from Mercury Marine

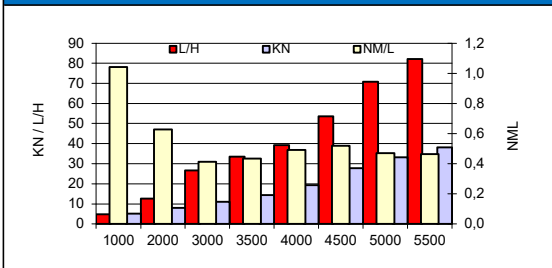
TEST CONDITIONS

Test Date	11.09.2020
Test Conductor	GF
Boat Weight as Tested (kg)	3390
Air Temperature (degrees C)	14
Elevation (m)	0
Sea State (calm / smooth / slight / moderate)	Smooth
Wind Velocity range (kn)	3
Fresh/Salt Water	Salt
Fuel Level at Testing (l)	100 %

PERFORMANCE SUMMARY

Top Speed (kn @ rpm)	41,5 @ 5900
Acceleration 0 - 20 kn (seconds)	7,9
Acceleration 0 - 30 kn (seconds)	14,2
Best Fuel Economy (nm/l @ rpm)	

PERFORMANCE CURVE



PERFORMANCE DATA

RPM	SPEED	FUEL CONSUMPTION	FUEL CONSUMPTION	RANGE	SOUND
RANGE	KN	L/H	NM/L	NM	dB-A
1000	5	4,8	1,0	309,0	
2000	7,9	12,6	0,6	185,4	
3000	11	26,6	0,4	123,6	
3500	14,5	33,5	0,4	123,6	
4000	19,3	39,2	0,5	154,5	
4500	27,8	53,6	0,5	154,5	
5000	33,3	70,8	0,5	154,5	
5500	38,2	82,2	0,5	154,5	
5800	40	93,8	0,4	123,6	
Top RPM	40	93,8	0,4	123,6	

ENGINE SPECIFICATIONS

Number of Engines	1
Engine	Mercury verado
Horsepower	300
Cylinders	V8
Drive or gear model and ratio	1,85

BOAT SPECIFICATIONS

Region/s sold	Norway
Manufacturer	Nordkapp boats
Website	www.nordkapp-boats.com
Boat Model	905 Grand Cupe
Boat Type	Pilot House
Material	Fiberglass
Length (m)	9,12
Beam (m)	2,98
Max hp Capacity	2x200hp
Fuel Tank Capacity (l)	309
Steering Type	PWR Steering
Dry Boat Weight (kg)	2550
Mounting Bolt Hole (outboard)	5 most upper

PROPELLER SPECIFICATIONS

Part Number	
Part Number	
Part Number	
Part Number	8M0137906
Mercury Name	Rev 4 18"
Material	SS
Diameter/Pitch	14,6x18
Number of Blades	4



Nordkapp Boats AS, Jellestadveien 30, 1739, Borgenhaugen, Norway

Nordkapp Boats AS
©2015 Mercury Marine, All Rights Reserved. Results on individual boats may vary depending on many factors, including weather and the condition of propeller, lower unit and boat bottom. Boat information based on manufacturer's published specifications.

www.nordkapp-boats.com
www.mercurymarine.com